



HERCULES® RetroDrain

Available in 3-, 4-, 5- and 6-in.sizes. Hercules RetroDrains, the industry's most popular retrofit drain, are available with a variety of options to support any project, including TPO or PVC coated flange for direct membrane attachment or copper stem and flange for more corrosive environments.



SPECIALTY DRAINS

All are constructed of aluminum and available in 3- and 4-inch sizes. All offer a patented U-Flow mechanical seal for a tight connection to the drain leader, and all can be installed from the rooftop without disturbing building occupants.



PIPEFLASH

OMG's line of aluminum roof flashing boots provides a fast and efficient method for sealing single clustered rooftop pipe penetrations on all types of roof systems.



OLYVENT

Available as either one-way vents or two-way breathers, the OMG OlyVent offers many unique features for better performance and design.



CUSTOM DRAINS AVAILABLE

One of OMG's specialties is designing and fabricating custom drains. Though most new and retrofit roof drain installations conform to standard industry practices, there are the occasions when an unusual condition occurs at a drain location. In such instances, the standard drain may need to be modified or customized to fit the particular site conditions.



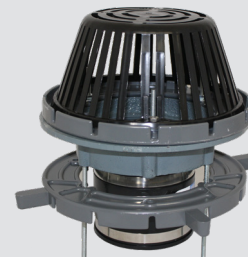
COPPER-TITE ROOF DRAIN

Features a 2" (51mm) wide band of high density expanding foam tape impregnated with asphalt which is factory applied in a compressed state around the drain outlet.



ENPOCO PAK ROOF DRAIN

Enpoco-Pak is the assembled kit of the ULRD Roof Drain with all the components for easy installation. Enpoco-Pak provides the essential features of more expensive drains at an affordable price. It is adaptable to most generic materials of single ply and conventional built-up roofing for use with roof decks of steel, wood, precast concrete or gypsum. This drain offers versatility and easy installation on new and existing roofs.



CAST PAK ROOF DRAIN

The new Cast-Pak Assembly of the RD-1 Roof Drain provides the essential features of more expensive cast iron drains at an affordable price. It is adaptable to most generic materials of single ply and conventional built-up roofing for use with roof decks of steel, wood, precast concrete or gypsum. This drain offers versatility and easy installation on new and existing roofs. Available in sizes 3" (76 mm), 4" (102 mm), 6" (152 mm) and 8" (203 mm).